

型号：KH-SD2829-U

REV.	DESCRIPTION	APPD	DATE
△1	滑块底部增加避位槽		0112/10
△2	主体金手指侧面增加避位		0324/10

NOTES:

1.MATERIAL:

HOUSING: HIGH TEMPERATURE THERMOPLASTIC
UL94V_0,COLOR:BLACK.

CONTACT: COPPER ALLOYS.

COVER: COPPER ALLOYS OR STEEL.

2.PLATING:

UNDERPLATE: NICKEL.

CONTACT AREA: GOLD OVER NICKEL.

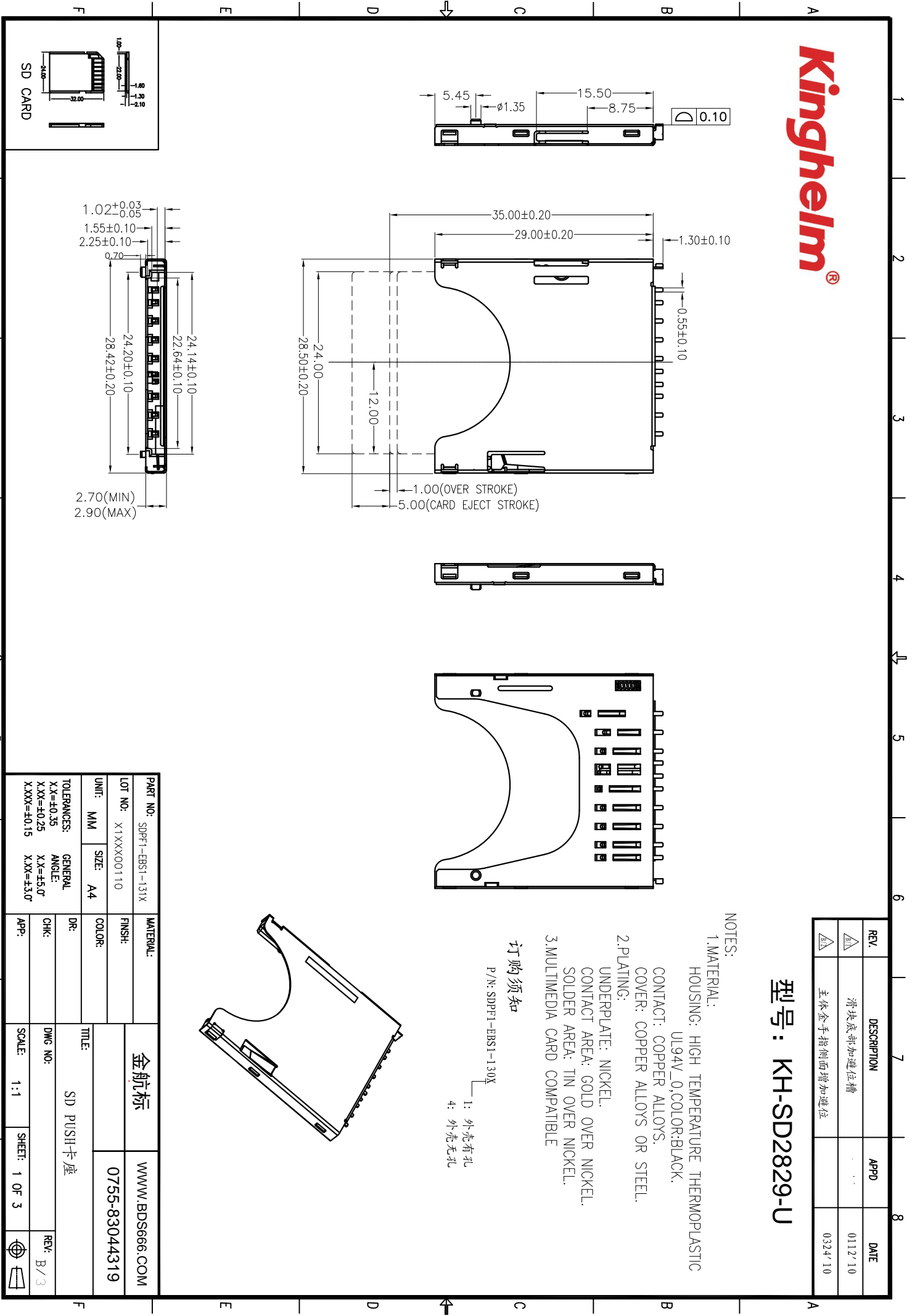
SOLDER AREA: TIN OVER NICKEL.

3.MULTIMEDIA CARD COMPATIBLE

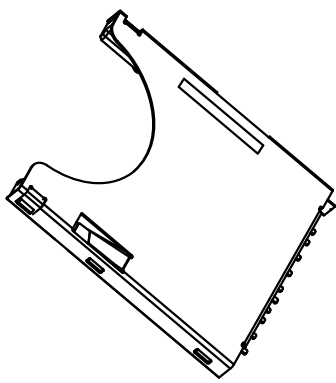
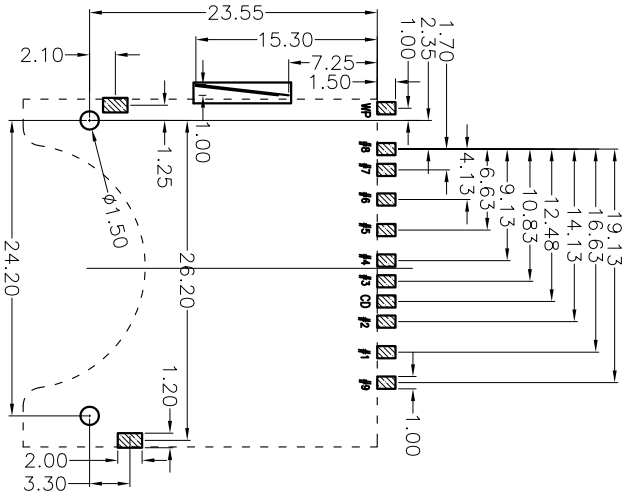
订购须知

P/N: SDPF1-EBST-130X

- 1: 外壳有孔
- 4: 外壳无孔



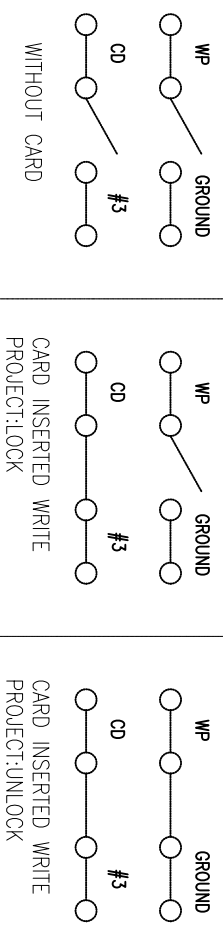
PART NO: SDPF1-EBST-131X		MATERIAL:	
LOT NO: X1XXXX00110	FINSH:	WWW.BDSS666.COM	
UNIT: MM	SIZE: A4	0755-83044319	
TOLERANCES:		TITLE: SD PUSH卡座	
X.X=±0.35	GENERAL ANGLE: X.X=±5.0°	DR:	REV: B/3
X.XX=±0.25	X.XX=±0.15	CHK:	
X.XXX=±0.15		APP:	
SCALE: 1:1		SHEET: 1 OF 3	



REV.	DESCRIPTION	APPD	DATE

SD CARD PIN DESIGN

PIN NO.	NAME	TYPE	DESCRIPTION
#1	CD/DAT3	I/O/PP	CARD DETECT/DATA LINE(BIT3)
#2	CMD	PP	COMMAND/RESPONSE
#3	VSS1	S	SUPPLY VOLTAGE GROUND
#4	VDD	S	SUPPLY VOLTAGE
#5	CLK	I	CLOCK
#6	VSS2	S	SUPPLY VOLTAGE GROUND
#7	DAT0	I/O/PP	DATA LINE(BIT 0)
#8	DAT1	I/O/PP	DATA LINE(BIT 1)
#9	DAT2	I/O/PP	DATA LINE(BIT 2)



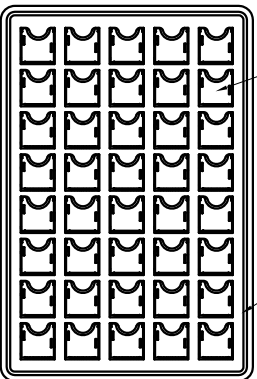
金航标
WWW.BDS666.COM
0755-83044319

PART NO.: SDPF1-EBS1-131X
LOT NO.: X1XX100110
UNIT: MM
SIZE: A4
COLOR: **DR:** **TITLE:** SD PUSH卡座
FINSH: **DR:** **GENERAL ANGLE:** X.X=±5.0°
TOLERANCES: X.X=±0.35 X.XX=±0.25 X.XXX=±0.15
CHK: **DWG NO.:** **SCALE:** 1:1
APP: **SHEET:** 2 OF 3
REV: B/3

Kinghelm®

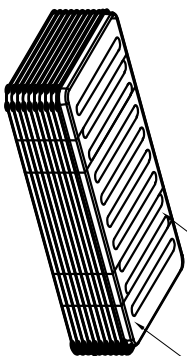
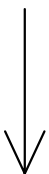
每盘40PCS

吸塑盘



吸塑盘规格: 320*215*10

NO. 1

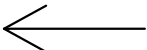


保护膜

顶盖

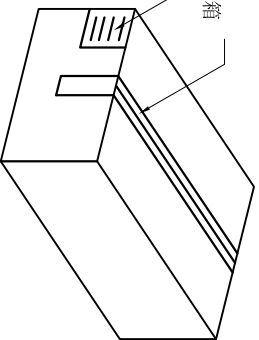
25层(1000PCS)

NO. 2



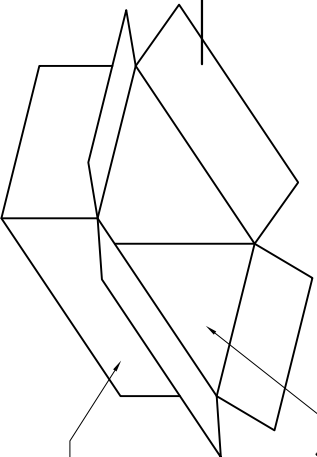
胶纸封箱

成品标签



纸箱规格: 340*240*150

NO. 4



每1000PCS一箱

纸箱

NO. 3

1. 材质要求:
 - 1.1 纸箱的材质为B=B; 外形尺寸为34*24*150M;
 - 1.2 PS盘的材质为PS, PS盘的外形尺寸为320*215*10MM;
2. 包装要求:
 - 2.1 每一盘装40PCS;
 - 2.2 每25盘累叠在一起, 共计1Kset; 上面需放一个空盘, 后用PE膜缠绕;
 - 2.3 把累叠好的PS盘放入纸箱中;
 - 2.4 把包装好的成品打包封箱, 并在纸箱中贴上标签;

REV.	DESCRIPTION	APPD	DATE

PART NO: SDPF1-EBS1-131X		MATERIAL:	
LOT NO: X1XX100110	FINSH:		WWW.BDS666.COM
UNIT: MM	SIZE: A4	COLOR:	0755-83044319
TOLERANCES:		TITLE: SD PUSH卡座	
X.X=±0.35	GENERAL ANGLE: X.X=±5.0°	DR: 杨凯 09/28/09	DWG NO: FP-090015
X.XX=±0.25	X.XX=±5.0°	CHK:	SCALE: 1:1
X.XXX=±0.15	X.XX=±3.0°	APP:	SHEET: 3 OF 3
		REV: B/3	